



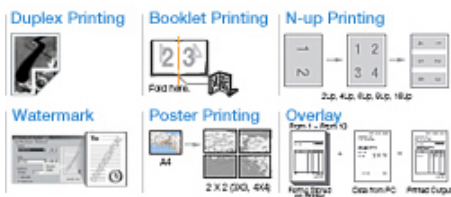
MultiXpress SCX-6545N

- fast print
- fast copy
- reliable printers
- wide touch screen



The Samsung SCX-6545N delivers high performance with a 200,000 pages-per month duty cycle, 3,240-sheet paper capacity, and an open architecture that enables advanced document workflow solutions. The SCX-6545N comes loaded with productivity enhancing features like an intuitive 7-inch color touch-screen control panel, 80 GB hard drive, advanced color scanning capabilities and more. With the SCX-6545N laser multifunction printer, it's not hard to imagine.

fast print



Printing black-and-white documents at 45 ppm (simplex) and 40 ppm (duplex) your workloads can be completed efficiently. The numerous standard printing features help you to print documents more easily and efficiently.

reliable printers

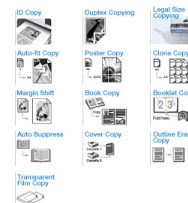
We'll take the hassle away. All of the printers within the MultiXpress series provide unparalleled reliability with high monthly duty cycles. This is because Samsung has designed the machines to be less service dependent, providing fewer down time periods within its life-cycle along with less paper jams or mis-feeds. In fact, we are confident that the only time you will open up your printer is to change the cartridge rather than to fix a paper jam.

scan to anywhere



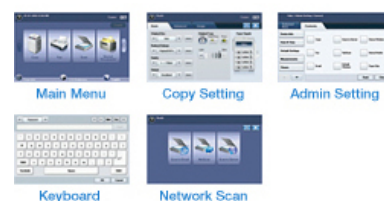
The MultiXpress SCX-6545N helps to distribute documents efficiently by scanning directly to e-mail, FTP, SMB or Netscan client.

fast copy



The MultiXpress SCX-6545N produces 45 ppm in black and white. Moreover, the MultiXpress SCX-6545N performs nearly all the copy functions that are generally operated on A3 DMFP.

wide touch screen

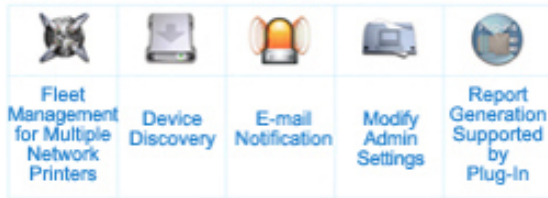


Samsung's exclusive 800 x 480 7" wide LCD touch screen and intuitive UI design is very ergonomic and easy to use. No manual or training required!

XOA Express Application platform

XOA Express Application platform is Samsung's open architecture system that allows you to add custom applications and services on your MFP, so that it could be integrated and optimize your workflow.

SyncThru administration



SyncThru™ web admin service allows IT managers to easily manage and monitor all printers / MFPs on the network. The powerful feature permits job accounting, usage metering, authentication, storage management, remote driver installation and modification settings.

SyncThru web service



It provides administrators with the ability to change network and individual printer settings, upgrade firmware and view network printer / MFP status.

Samsung Takeback and Recycling Program



Samsung's S.T.A.R. Program is a free service brought to you by Samsung for our business and consumer customers willing to take responsibility in helping to keep the environment clean.

expanded printing



The standard 80 GB HDD ensures smooth print traffic in a busy office and print environment.



ENERGY STAR compliant

By being ENERGY STAR compliant you are assured that your Samsung model is helping the environment by using less energy while saving you money. ENERGY STAR is a joint program of the U.S. Environmental Protection Agency and the U.S. Department of Energy promoting energy efficiency.

Overview	Function	Print, Scan, Fax, Copy, Network, Duplex
Print	Print Speed (Mono)	up to 45 ppm in letter
	First Print Out Time (Mono)	less than 8 seconds (from Standby mode)
	Print Resolution	up to 1,200 x 1,200 dpi effective output
	Emulation	PCL5e, PCL6, PostScript 3, PDF 1.4, TIFF, JPG
	Duplex	standard
Copy	Copy Speed	up to 45 cpm in letter
	Copy Resolution	text / scan: 600 x 300 dpi, printing 600 x 600 dpi, text / photo: scan: 600 x 300 dpi, printing: 600 x 600 dpi, photo: scan 600 x 600 dpi, platen@ADF printing: 600 x 600 dpi
	First Copy Out Time	less than 5 seconds

	(Mono)	
	Zoom Rate	25 ~ 400% (platen), 25 ~ 200% (ADF)
	Multy Copy	1 ~ 999
	Duplex Copy	using platen: 1:1, 1:2 using DADF: 1:1, 1:2 (short), 1:2 (long) 2:1, 2:2, 2:1 (rotate side 2)
Scan	Compatibility	twain standard, WIA standard
	Method	color CCD
	Resolution (Optical)	600 x 600 dpi
	Resolution (Enhanced)	max. 4,800 x 4,800 dpi
	Scan to	e-mail, FTP, SMB, Netscan client
Fax	Compatibility	ITU-T G3, super G3
	Modem Speed	33.6 kbps
	Resolution	standard: 203 x 98 dpi fine: 203 x 196 dpi super fine: 300 x 300 dpi
	Memory	16 MB
	Auto Dial	speed dial: 200 locations
	Fax Feature	3 sec fax speed broadcasting up to 209 locations fax to HDD, fax, e-mail, SMB and FTP, priority transmission
Paper Handling	Input Capacity and Types	main tray: up to 520 sheets (20 lbs.) MP tray: 100 sheets
	Output Capacity and Types	500-sheet face down (20 lbs.)
	Media Size	letter, legal, oficio, folio, A4, JIS B5, ISO B5, executive, A5, statement, A6, PostCard 4 x 6, envelope B5, envelope monarch, envelope COM-10, envelope C5, envelope C6
	Media Type	plain paper, thin paper, bond, punched, pre-printed, recycled
	ADF Capacity	DADF 100 sheets (20 lbs.)
	ADF Document Size	width: 5.7" - 8.5" Length: 5.7" x 14.0" for single page scan 5.7" x 15.7" for multi page scan
General	LCD	7" WVGA color touch-saver LCD (800 x 480)
	Memory / Storage	256 MB / 512 MB maximum
	OS Compatibility	Windows 2000 (32 / 64 bit) XP (32 / 64 bit) 2003 (32 / 64 bit) Vista (32 / 64 bit) 2008 (32 / 64 bit) Red-Hat Enterprise Linux WS4,5 (32 / 64 bit) Fedora Core 2 - 9 (32 / 64 bit) Mandriva 2005 - 2008 (32 / 64 bit) OpenSuSuSE 9.1, 9.2, 9.3, 10.0, 10.1, 10.2, 10.3, 11.0 (32 bit) SuSeLinux Enterprisr Desktop 9,10 (32 / 64) Ubuntu 6.04, 6.14, 7.04, 7.10, 8.04 (32 / 64) Debian 3.1, 4.0 (32 / 64 bit)
	Interface	hi-speed USB 2.0, ethernet 10 / 100 base TX, ethernet 10 / 100 / 1000 base TX (Gigabit ethernet support)
	Noise Level	Printing: > 55 dBCopy: > 57 dB Standby: 37 dB
	Duty Cycle, Monthly	up to 200,000 pages

	Dimension (W x D x H)	25.2" x 19.4" x 23.9"
	Weight	106.3 lbs.
Consumables	Yield	toner: average cartridge yield 25,000 standard pages drum: 80,000 pages(1)
	Type	2-piece cartridge
	Model Code	toner: SCX-D6555A drum: SCX-R6555A
Options	Options	256 MB (ML-MEM160)520 page paper cassette tray (SCX-S6555A)high capacity feeder (SCX-HFC100)fax kit (SCX-FAX210)1-bin finisher (SCX-FN11S)2-bin finisher (SCX-FIN20S)4-bin mailbox (SCX-MBT40S)staple cartridge (SCX-STP000)short stand (SCX-DSK10S)tall stand with storage cabinet (SCX-DSK10T)FDI kit (SCX-KIT20F)SmarThru workflow v. 1.0 (SCX-KIT11S)

Features and specifications are subject to change without prior notification.

(1) Declared yield value in accordance with ISO / IEC 19752.